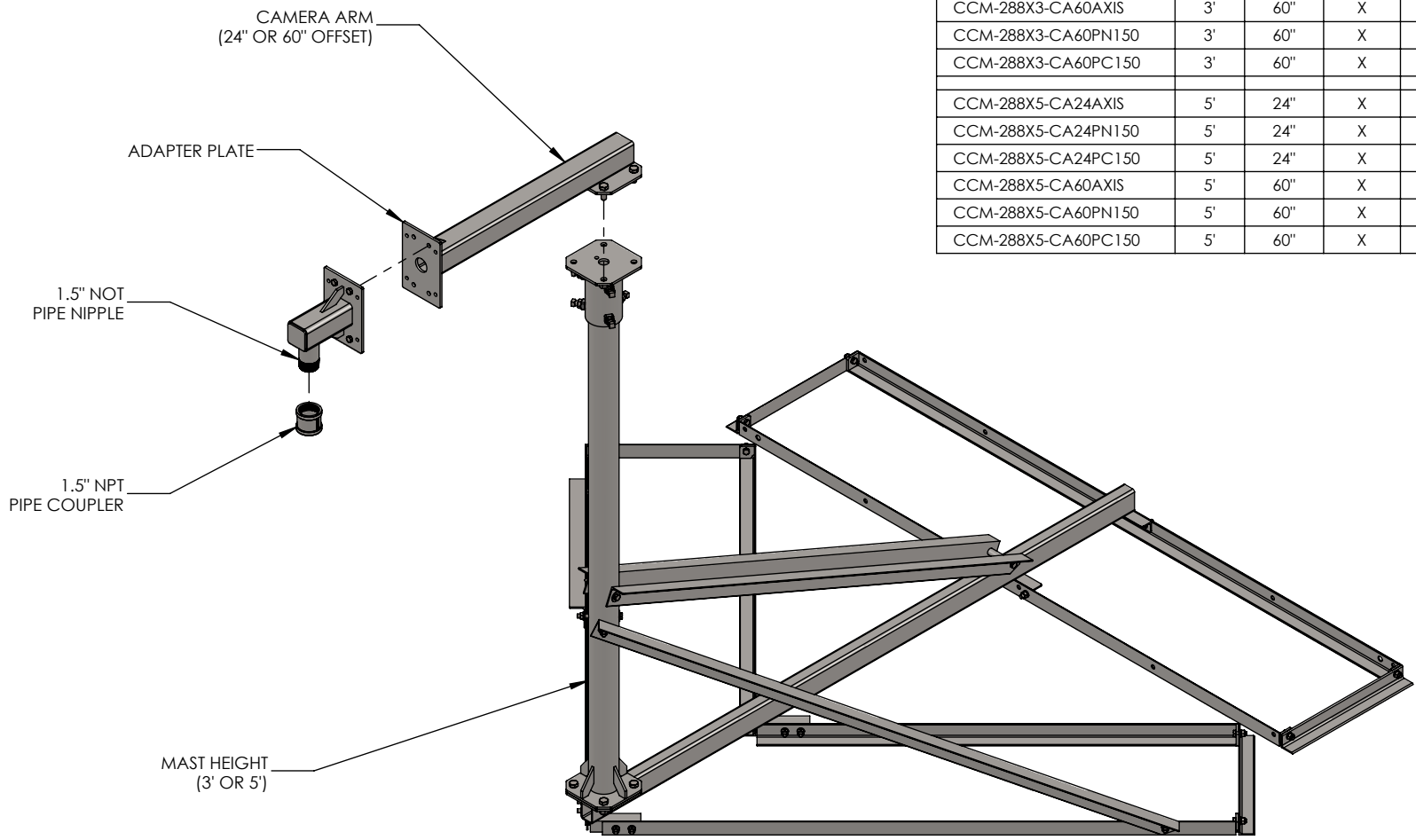


PART #	MAST HEIGHT	ARM OFFSET LENGTH	ADAPTER PLATE	1.5"NPT PIPE NIPPLE (M)	1.5"NPT PIPE COUPLER (F)	WEIGHT (LBS.)
CCM-288X3-CA24AXIS	3'	24"	X			138
CCM-288X3-CA24PN150	3'	24"	X	X		145
CCM-288X3-CA24PC150	3'	24"	X	X	X	146
CCM-288X3-CA60AXIS	3'	60"	X			160
CCM-288X3-CA60PN150	3'	60"	X	X		167
CCM-288X3-CA60PC150	3'	60"	X	X	X	168
CCM-288X5-CA24AXIS	5'	24"	X			150
CCM-288X5-CA24PN150	5'	24"	X	X		157
CCM-288X5-CA24PC150	5'	24"	X	X	X	158
CCM-288X5-CA60AXIS	5'	60"	X			172
CCM-288X5-CA60PN150	5'	60"	X	X		179
CCM-288X5-CA60PC150	5'	60"	X	X	X	180



PROPRIETARY AND CONFIDENTIAL
 THE INFORMATION CONTAINED IN THIS DRAWING IS THE SOLE PROPERTY OF BAIRD SUPPORTING SYSTEMS. ANY REPRODUCTION IN PART OR AS A WHOLE WITHOUT THE WRITTEN PERMISSION OF BAIRD SUPPORTING SYSTEMS IS PROHIBITED.



WWW.BAIRD MOUNTS.COM

UNLESS OTHERWISE SPECIFIED:
 DIMENSIONS ARE IN INCHES
 TOLERANCES:
 FRACTIONAL ±
 ANGULAR: MACH ± BEND ±
 TWO PLACE DECIMAL ±
 THREE PLACE DECIMAL ±

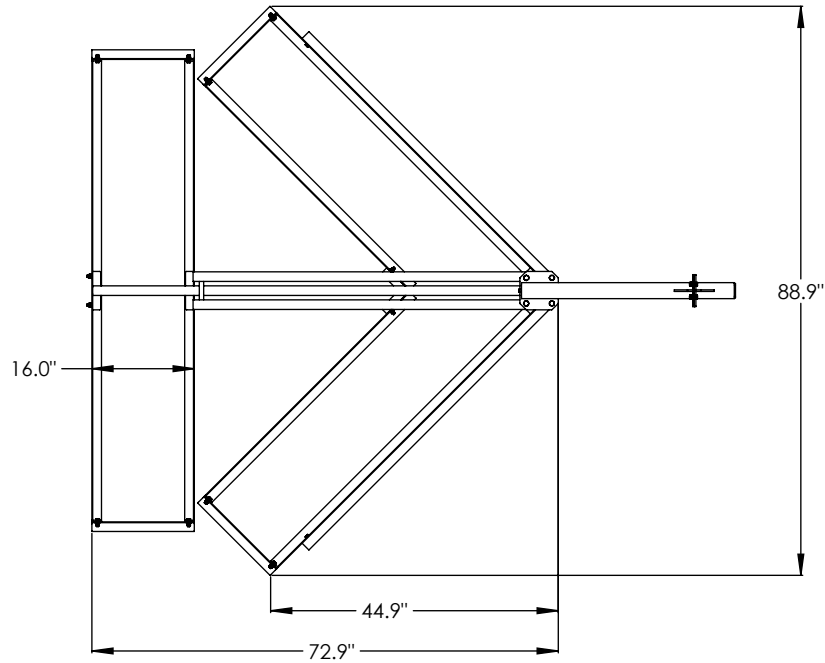
DO NOT SCALE DRAWING

BAIRD MOUNTING SYSTEMS

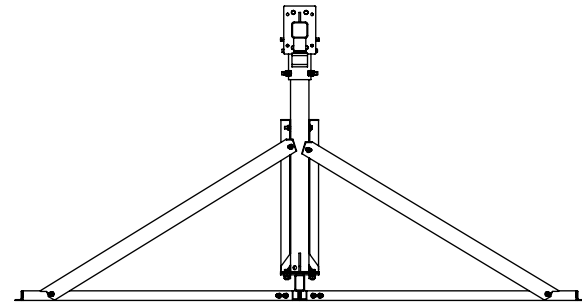
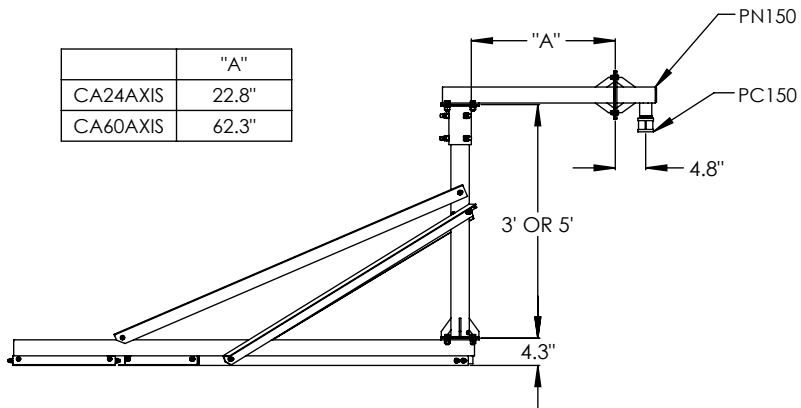
WATERLOO, IA 50703
 PHONE: 319-233-3561
 SALES@BAIRD MOUNTS.COM

TITLE:
 CORNER CAMERA MOUNT

DRAWN BY JK	DATE 02/25/22
MATERIAL STEEL	FINISH HDG
DWG. PURPOSE CUSTOMER	SHEET 10F4
SCALE -	
PART. NO. SEE TABLE ABOVE	
DWG. NO. CCM-288X(0)-(000)	



	"A"
CA24AXIS	22.8"
CA60AXIS	62.3"



PROPRIETARY AND CONFIDENTIAL
 THE INFORMATION CONTAINED IN THIS DRAWING IS THE SOLE PROPERTY OF BAIRD SUPPORTING SYSTEMS. ANY REPRODUCTION IN PART OR AS A WHOLE WITHOUT THE WRITTEN PERMISSION OF BAIRD SUPPORTING SYSTEMS IS PROHIBITED.



WWW.BAIRD MOUNTS.COM

UNLESS OTHERWISE SPECIFIED:
 DIMENSIONS ARE IN INCHES
 TOLERANCES:
 FRACTIONAL ±
 ANGULAR: MACH ± BEND ±
 TWO PLACE DECIMAL ±
 THREE PLACE DECIMAL ±

DO NOT SCALE DRAWING

BAIRD MOUNTING SYSTEMS

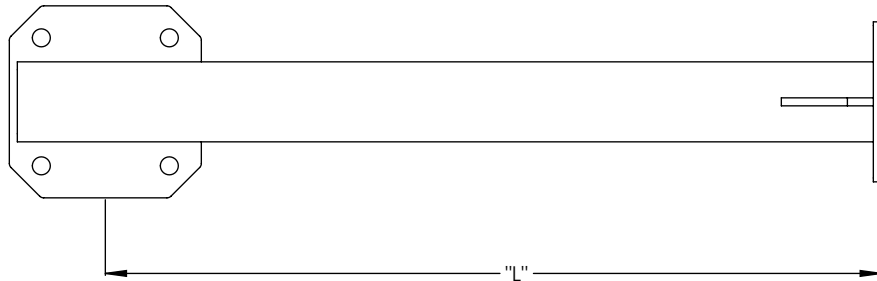
WATERLOO, IA 50703
 PHONE: 319-233-3561
 SALES@BAIRDMOUNTS.COM

TITLE:
CORNER CAMERA MOUNT

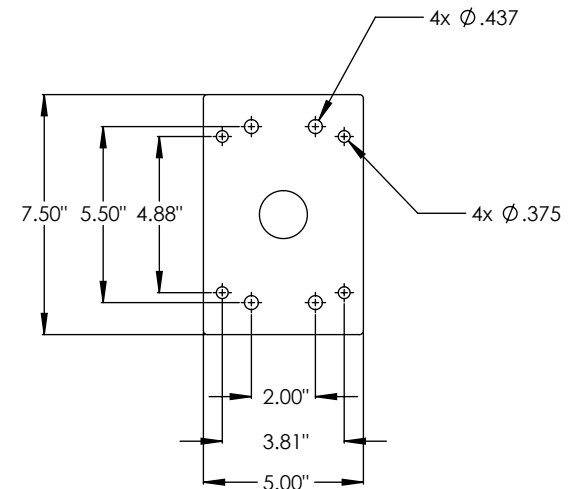
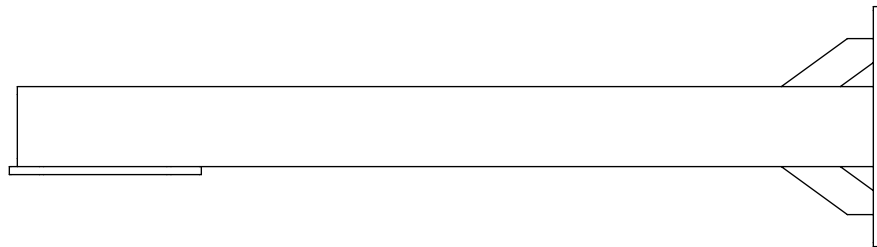
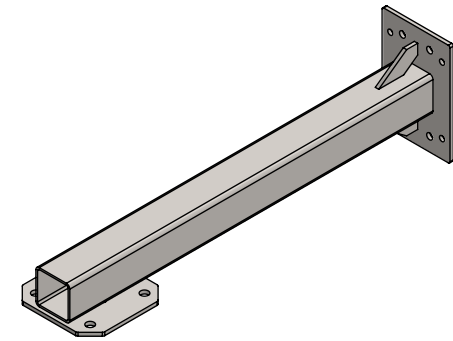
DRAWN BY JK	DATE 02/25/22
MATERIAL STEEL	FINISH HDG
DWG. PURPOSE CUSTOMER	SHEET 2OF4
	SCALE -

PART. NO.
SEE TABLE ON PAGE 1

DWG. NO.
CCM-288X(0)-(0000)



MAST
CENTERLINE



CAMERA ARM-AXIS	
	"L"
CA24AXIS	24.25"
CA60AXIS	63.75"

PROPRIETARY AND CONFIDENTIAL
THE INFORMATION CONTAINED IN THIS DRAWING IS THE SOLE PROPERTY OF BAIRD SUPPORTING SYSTEMS. ANY REPRODUCTION IN PART OR AS A WHOLE WITHOUT THE WRITTEN PERMISSION OF BAIRD SUPPORTING SYSTEMS IS PROHIBITED.



WWW.BAIRD MOUNTS.COM

UNLESS OTHERWISE SPECIFIED:
DIMENSIONS ARE IN INCHES
TOLERANCES:
FRACTIONAL ±
ANGULAR: MACH ± BEND ±
TWO PLACE DECIMAL ±
THREE PLACE DECIMAL ±

DO NOT SCALE DRAWING

BAIRD MOUNTING SYSTEMS

WATERLOO, IA 50703
PHONE: 319-233-3561
SALES@BAIRD MOUNTS.COM

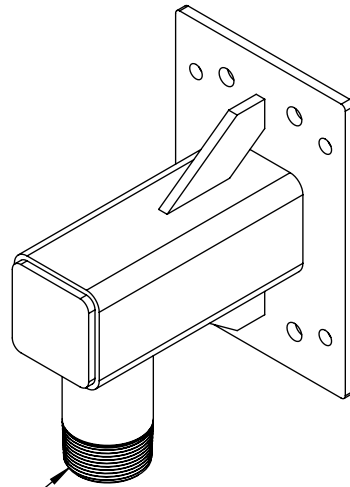
TITLE:
CORNER CAMERA MOUNT

DRAWN BY
JK DATE
02/25/22

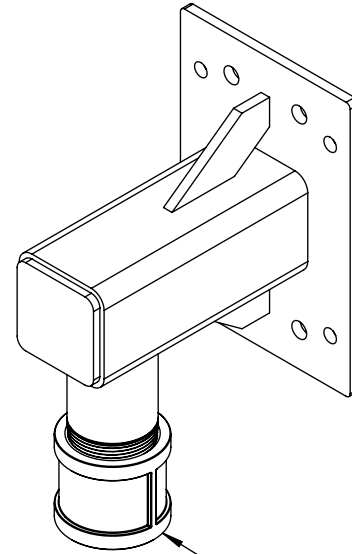
MATERIAL
STEEL FINISH
HDG

DWG. PURPOSE CUSTOMER	SHEET 30F4	SCALE -
--------------------------	---------------	------------

PART. NO.
-
DWG. NO.
CCM-288X(0)-(0000)



1.5" NPT PIPE NIPPLE



1.5" NPT PIPE COUPLER

ADAPTER-1.5NPT	
PART#	
PN150	1.5"NPT PIPE NIPPLE
PC150	1.5"NPT PIPE COUPLER

PROPRIETARY AND CONFIDENTIAL
 THE INFORMATION CONTAINED IN THIS DRAWING IS THE SOLE PROPERTY OF BAIRD SUPPORTING SYSTEMS. ANY REPRODUCTION IN PART OR AS A WHOLE WITHOUT THE WRITTEN PERMISSION OF BAIRD SUPPORTING SYSTEMS IS PROHIBITED.



WWW.BAIRD MOUNTS.COM

UNLESS OTHERWISE SPECIFIED:
 DIMENSIONS ARE IN INCHES
 TOLERANCES:
 FRACTIONAL ±
 ANGULAR: MACH ± BEND ±
 TWO PLACE DECIMAL ±
 THREE PLACE DECIMAL ±

DO NOT SCALE DRAWING

BAIRD MOUNTING SYSTEMS

WATERLOO, IA 50703
 PHONE: 319-233-3561
 SALES@BAIRD MOUNTS.COM

TITLE:
 CORNER CAMERA MOUNT

DRAWN BY	JK	DATE	02/25/22	
MATERIAL	STEEL	FINISH	HDG	
DWG. PURPOSE	CUSTOMER	SHEET	4OF4	SCALE
				-
PART. NO.	-			
DWG. NO.	CCM-288X(0)-(0000)			